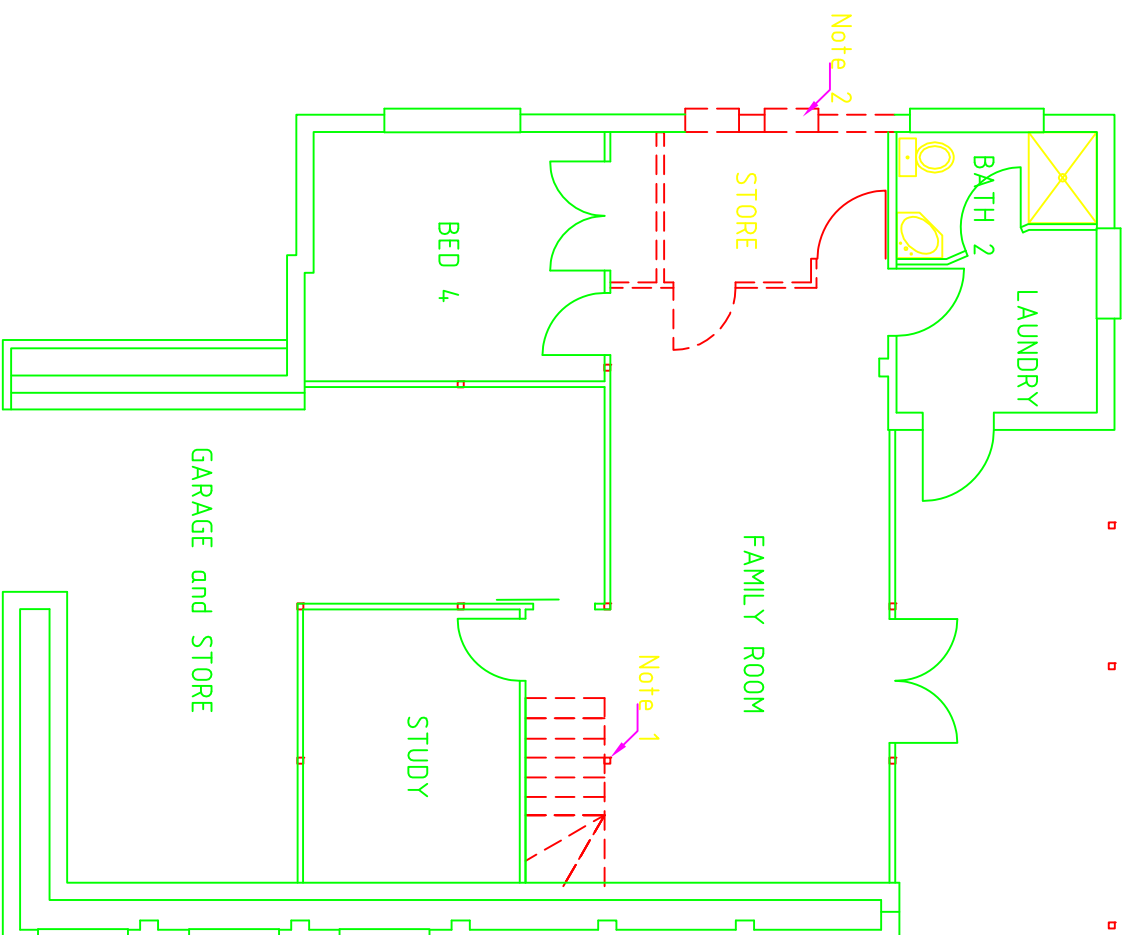


Notes

--- denotes walls, fixtures and fittings to be demolished

Note 1 Internal stairs removed including steel support post - open ceiling to permit installation of new beam

Note 2 External wall to be demolished to suit stair case penetration only, make good opening and seal to new staircase

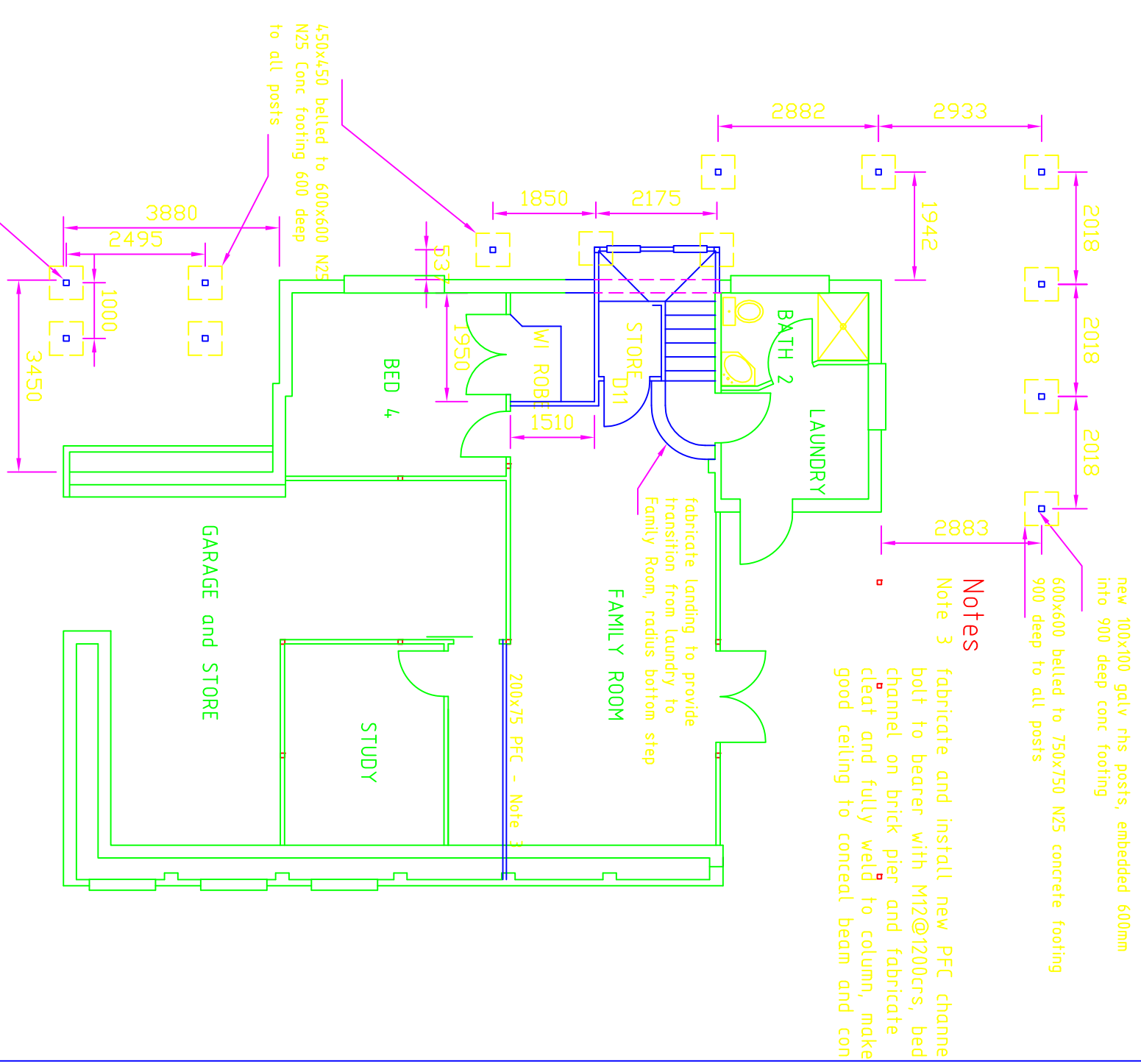


2 PLAN-EXISTING LOWER FLOOR
SCALE 1:100

NO.	DRAWING REVISIONS	APPROVED	NO.	DRAWING REVISIONS	APPROVED
APPROVED BY : P. Barker DBSA 79717					
CHECKED BY : P. Barker DBSA 79717					
DESIGNER : T&A COOP					
DRAWN BY : PEZ					

A PROJECT FOR: T&A COOP ALTERATIONS AND ADDITIONS LOWER FLOOR PLANS		DRAWING STATUS: CONSTRUCTION FLOOR PLAN: 2 ACAD DWG FILE NAME AND DATE: MAY 06 YEAR CODE: PW21 PROJECT NUMBER: A3 SHEET NUMBER: AMENDMENT
---	--	--

3 PLAN-PROPOSED LOWER FLOOR
SCALE 1:100



Notes

new 100x100 galv rhs posts, embedded 600mm into 900 deep conc footing

600x600 belled to 750x750 N25 concrete footing 900 deep to all posts

Note 3 fabricate and install new PFC channe bolt to bearer with M12@1200cns, bed channel on brick pier and fabricate cleat and fully weld to column, make good ceiling to conceal beam and con

fabricate landing to provide transition from laundry to Family Room, radius bottom step

200x75 PFC - Note 3

new 100x100 rhw timber posts, 600 long "H" galv verandah bracket embedded into 900 deep conc footing provide Y12 bar to full depth of footing

450x450 belled to 600x600 N25 N25 Conc footing 600 deep to all posts